



Commercial
Vehicles

VW T6.1 2020 MY
DOOR LOGO PROJECTOR LAMP INSTALLATION MANUAL
PT. ZGB-5GA-052-002



KIT CONTENTS

2 x Wiring loom (Fully Populated),
2 x Logo L.E.D projector lamps,
2 x 4mm short rivets,
10 x Cable ties,
4 x Blue Duraseal crimp connector,

PRE-INSTALLATION CHECKS

Carry out a functional check and test of the vehicle systems prior to starting the installation, in particular, the area to be worked on during the course of the installation.

TRIM REMOVAL

Both door trim panels,

TECHNICAL HELPLINE

Tel: 0208 867 2341 Email: technical@vestatec.co.uk

INSTALLATION NOTES

Ensure prior to installation that the vehicle is in neutral and the vehicle battery is disconnected. Do not re-connect battery with the vehicle in gear.

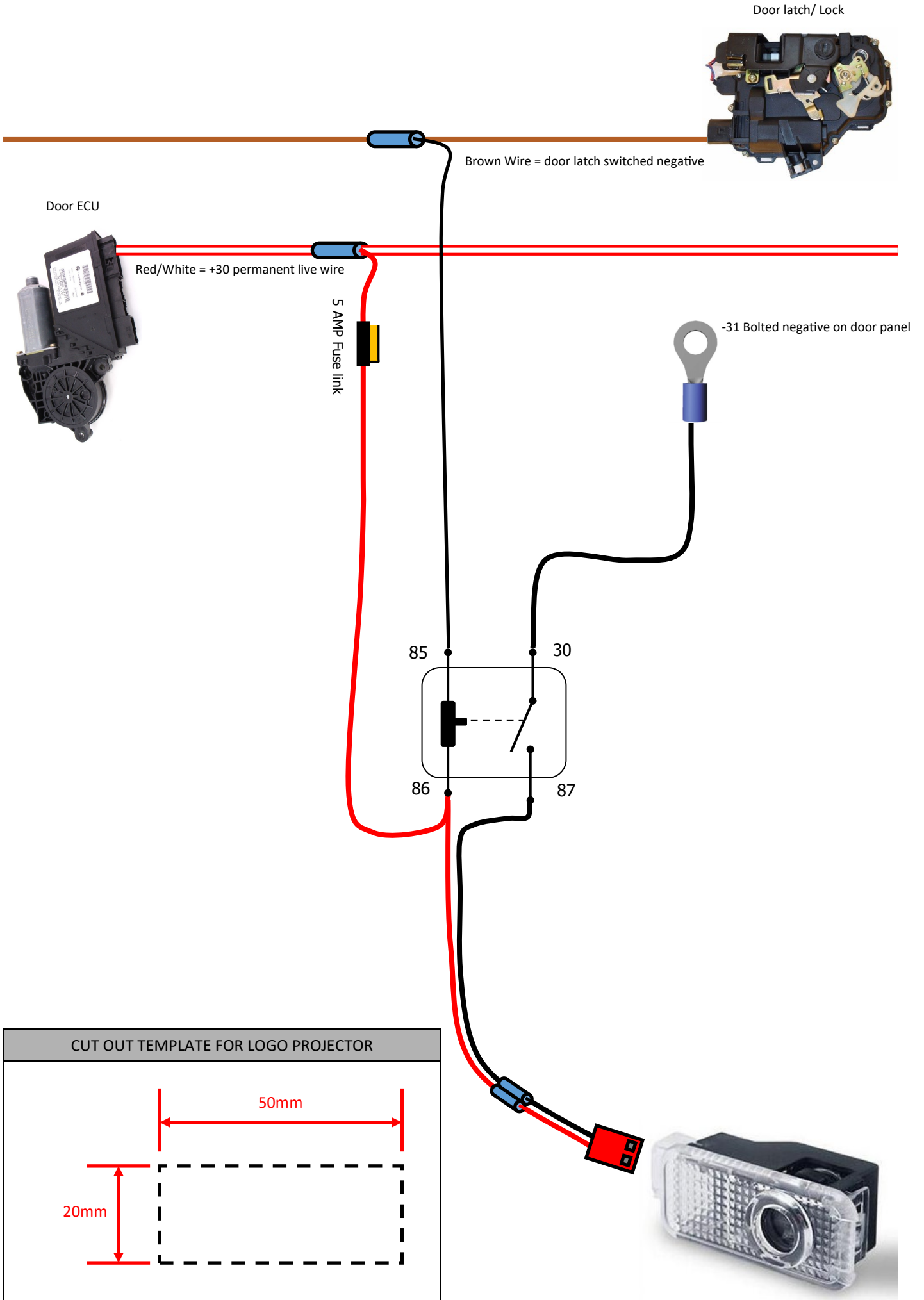
Verify connection points with an intrinsically safe, digital multi-meter.

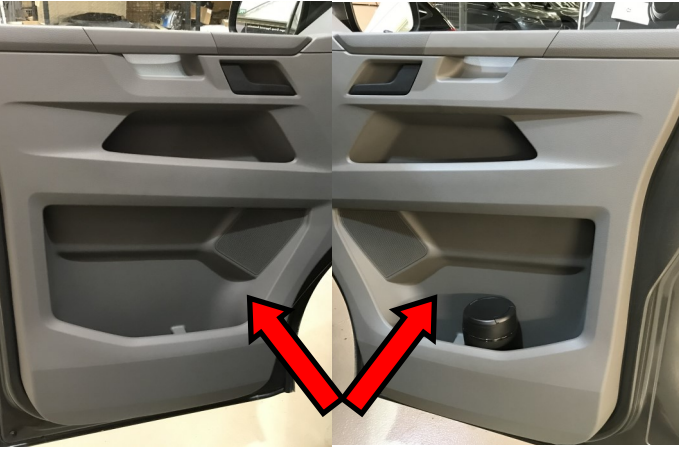
Where indicated, ensure all electrical connections are made using the approved VW group methodology

Re-apply protective tape to any section of the vehicle harness exposed during installation.

Always secure wiring harnesses away from any moving parts

Treat any drilled holes with an appropriate anti-corrosion paint/spray.





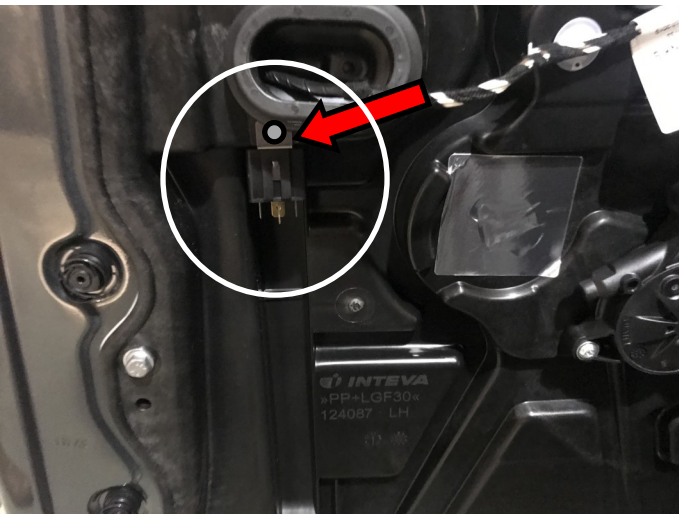
1.

Remove the Driver's and Passenger's front door trims.



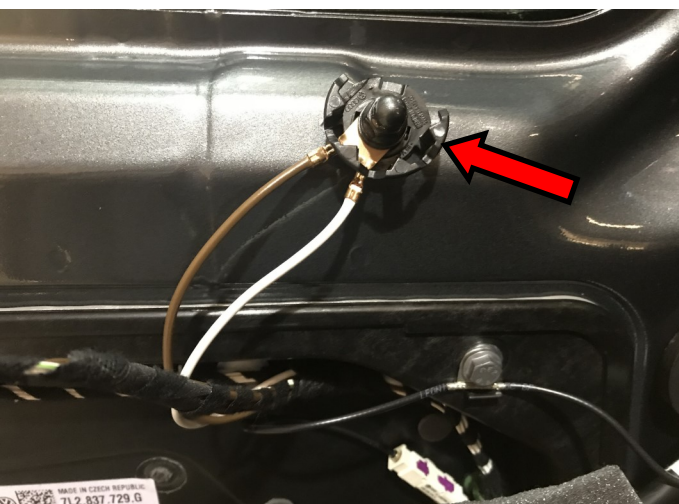
2.

Drill a 4mm hole in the plastic inner door panel below the door lock unit loom grommet as per the image opposite.



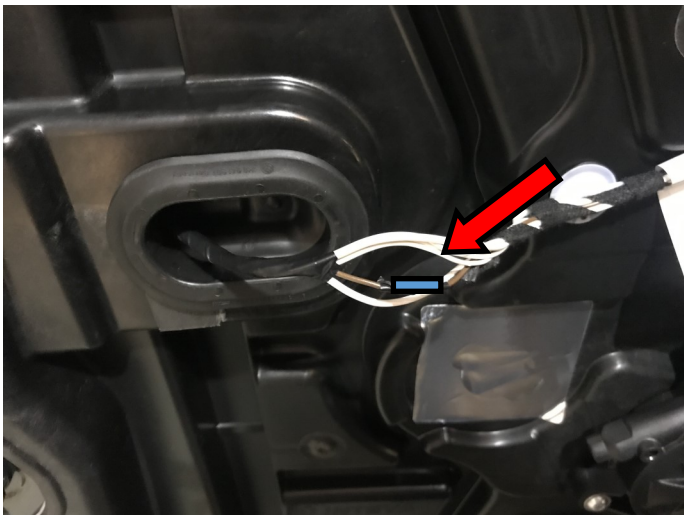
3.

Use a Rivet Gun to rivet the projector lamp loom's Relay into position as per the image opposite.

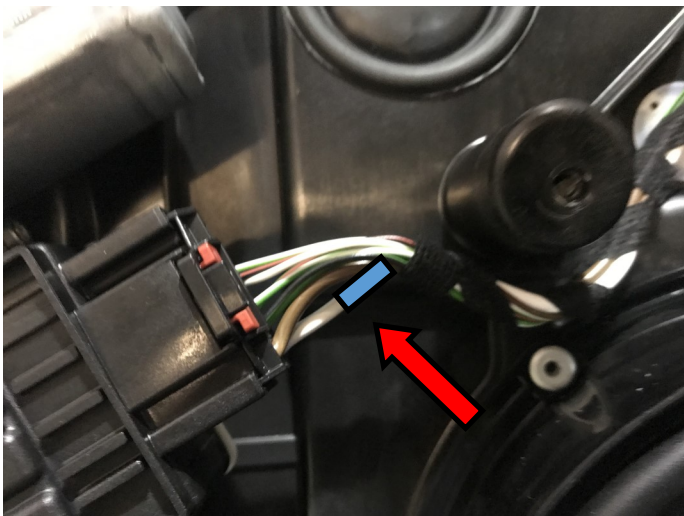


4.

Route the black wire/ring connector up to the bolted chassis point on the door and connect it as per the image opposite.



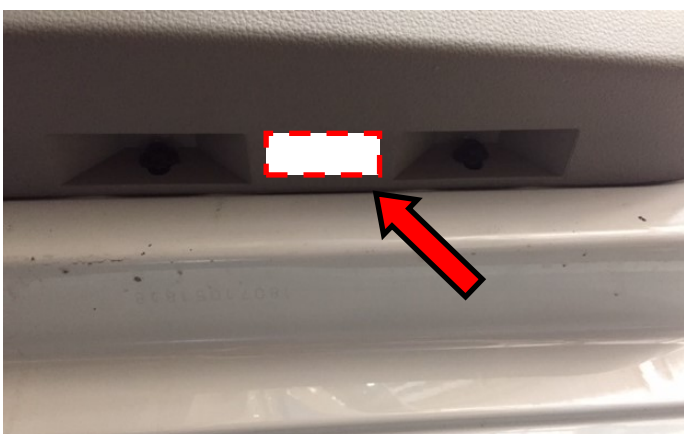
5.
Route the Black negative wire to the Brown door lock/latch loom wire and splice connect it using the supplied blue duraseal crimp connectors as per the image opposite.
Once crimped and heated allow to cool and then cover with electrical insulation tape.




6.
Route the Red positive wire to the Red/White door ECU loom wire and splice connect it using the supplied blue duraseal crimp connectors as per the image opposite.
Once crimped and heated allow to cool and then cover with electrical insulation tape.



7.
Cable tie up the projector loom to the factory door loom to prevent rattling due to movement.



8.
Use the Template provided on page 2 to mark and cut out a 50mm x 20mm hole in the bottom of the door trim panel.
Location marked in image opposite.

Some filing may be required to ensure a perfect fitment.



9.

Connect your logo projector lamp wiring and then refit your door trim panel.

Push the logo projector lamp into place

CORRECT OPERATION OF L.E.D LOGO PROJECTION SYSTEM

The logo projection works off the factory door circuit. Once the door is opened the logo projectors are switched on. They switch back off when the door is closed.

