



Commercial  
Vehicles

VW T6 2018MY<  
DOOR LOGO PROJECTOR LAMP INSTALLATION  
MANUAL PT. ZGB5GA052 002



#### KIT CONTENTS

2 x Wiring loom (Fully Populated),  
2 x Logo L.E.D projector lamps,  
2 x 4mm short rivets,  
10 x Cable ties,  
4 x Blue Duraseal crimp connector,

#### PRE-INSTALLATION CHECKS

Carry out a functional check and test of the vehicle systems prior to starting the installation, in particular, the area to be worked on during the course of the installation.

#### TRIM REMOVAL

Both door trim panels,

#### TECHNICAL HELPLINE

Tel: 0208 867 2341 Email: [technical@vestatec.co.uk](mailto:technical@vestatec.co.uk)

#### INSTALLATION NOTES

**Ensure prior to installation that the vehicle is in neutral and the vehicle battery is disconnected. Do not re-connect battery with the vehicle in gear.**

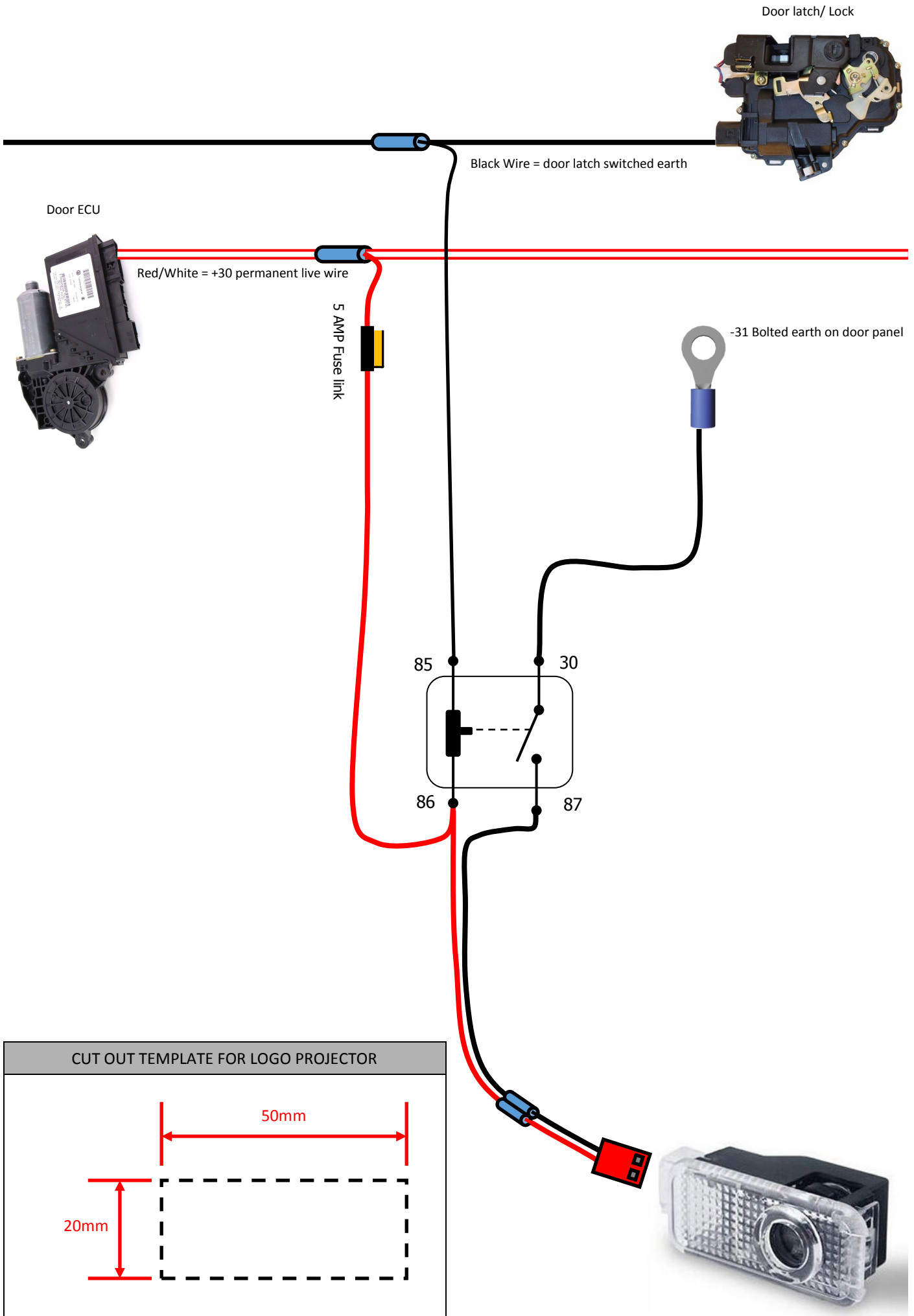
**Verify connection points with an intrinsically safe, digital multi-meter.**

**Where indicated, ensure all electrical connections are made using the approved VW group methodology**

**Re-apply protective tape to any section of the vehicle harness exposed during installation.**

**Always secure wiring harnesses away from any moving parts**

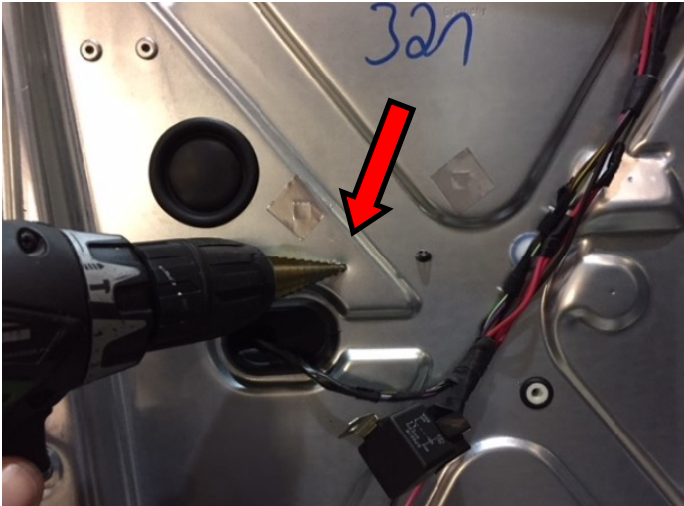
**Treat any drilled holes with an appropriate anti-corrosion paint/spray.**





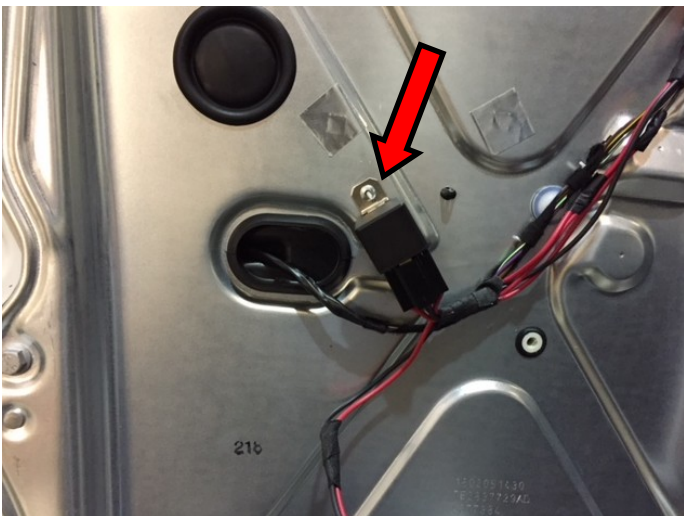
1.

Remove the Driver's and Passenger's front door trims.



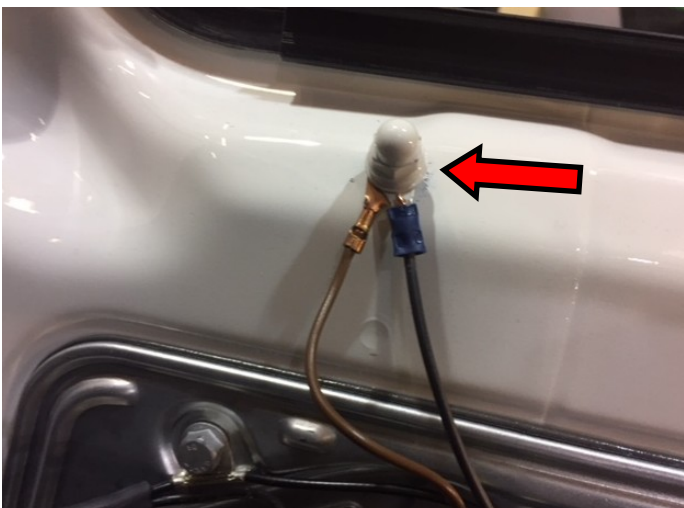
2.

Drill a 4mm hole in the metal inner door panel above the door lock unit loom grommet as per the image opposite.



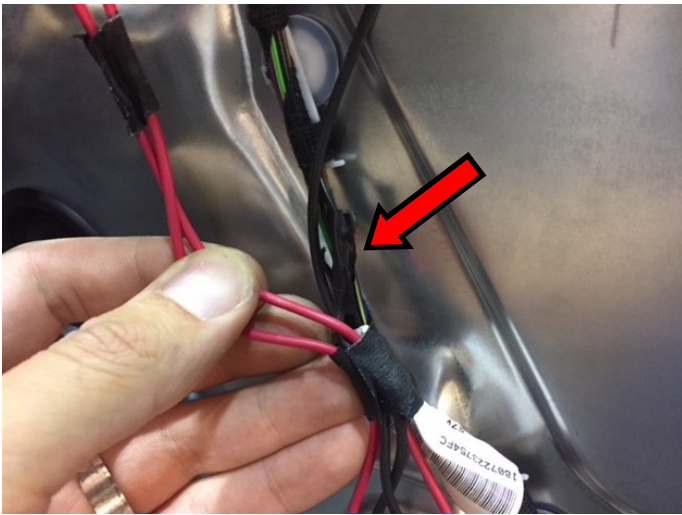
3.

Use a Rivet Gun to rivet the projector lamp loom's Relay into position as per the image opposite.



4.

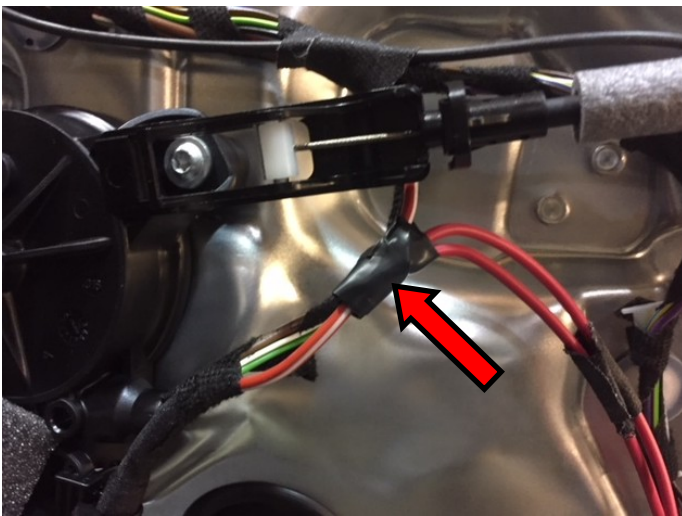
Route your earth ring connector up to the bolted earth point on the door and connect as per the image opposite.



5.

Route your Black earth wire to the Black door lock/latch loom wire and splice connect it using the supplied blue duraseal crimp connectors as per the image opposite.

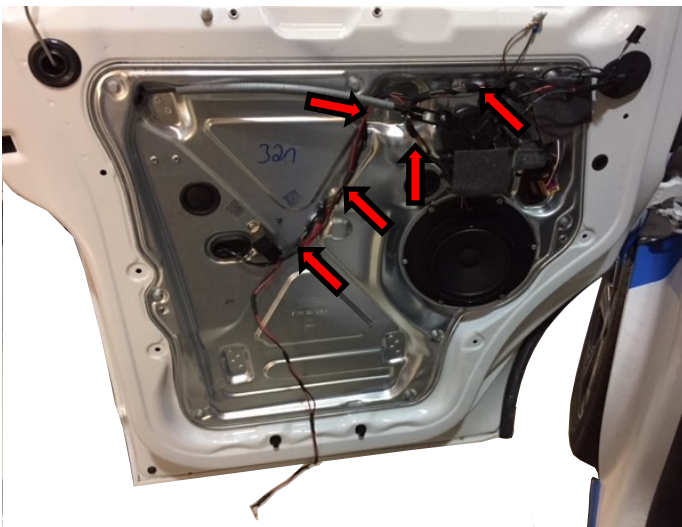
Once crimped and heated allow to cool and then cover with electrical insulation tape.



6.

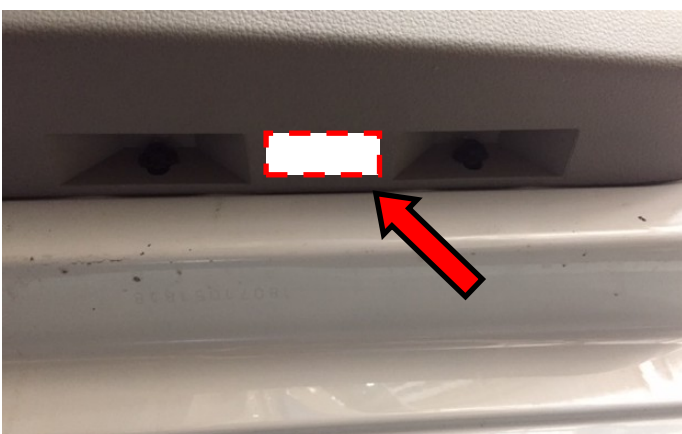
Route your Red power wire to the Red/White door ECU loom wire and splice connect it using the supplied blue duraseal crimp connectors as per the image opposite.

Once crimped and heated allow to cool and then cover with electrical insulation tape.



7.

Cable tie up the projector loom to the factory door loom to prevent and short circuiting or rattling due to movement.



8.

Use the Template provided on page 2 to mark and cut out a 50mm x 20mm hole in the bottom of the door trim panel.

Location marked in image opposite.



Some filing may be required to ensure a perfect fitment.



9.

Connect your logo projector lamp and wiring and then refit your door trim panel.

Push the logo projector lamp into place

#### CORRECT OPERATION OF L.E.D LOGO PROJECTION SYSTEM

The logo projection works off the factory door circuit. Once the door is opened the logo projectors are switched on. They switch back off when the door is closed.

