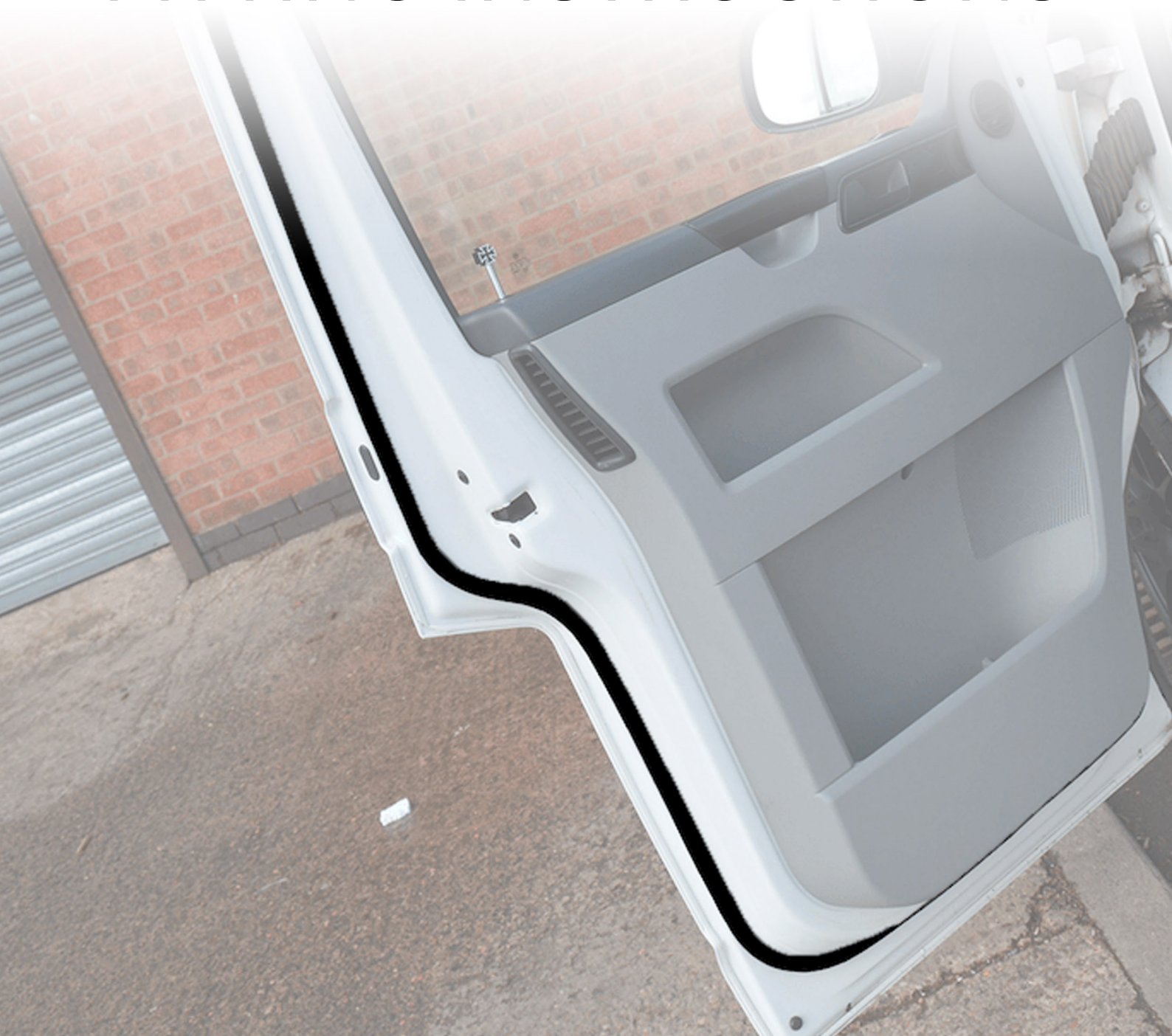




WWW.VEEDUBTRANSPORTERS.CO.UK

(CAB DOOR SEAL) FITTING INSTRUCTIONS



Required Tools

- Scissors
- Microfibre Cloth
- Soapy Water
- Wipes

Time Needed



~10 Minutes

Difficulty



Easy

Hard

Step 1

Wipe down the surface area to remove any dirt/grime ready for fitment.

Place the seal in the sun or near a radiator for a few minutes prior to fitting to ensure the adhesive will adhere later on.



Step 2

Slowly peel away the red tape and begin to run the seal down the edge of the door.

DO NOT remove all of the tape at once! Slowly pull back the tape as you go.



Step 3

Continue to run the seal down the door as shown.

Make sure a firm pressure is applied to the seal to allow the adhesive to bond to the bodywork.



Step 4

Once you have reached the inside, cut the seal. This will leave you with enough for the other side.

Run your hand along the seal again and press onto the bodywork.



Step 5

Your driver's side door seal is now fitted!

The passenger side is slightly different due to the cut out in the door for the fuel cap, but the procedure is almost identical.

See in the image attached...





WWW.VEEDUBTRANSPORTERS.CO.UK

Send us pictures of your fitted product on Social Media!

 **veedubtransporters**

 **Vee Dub Transporters**

For any further assistance please call our Customer Services Team



0116 409 1911

